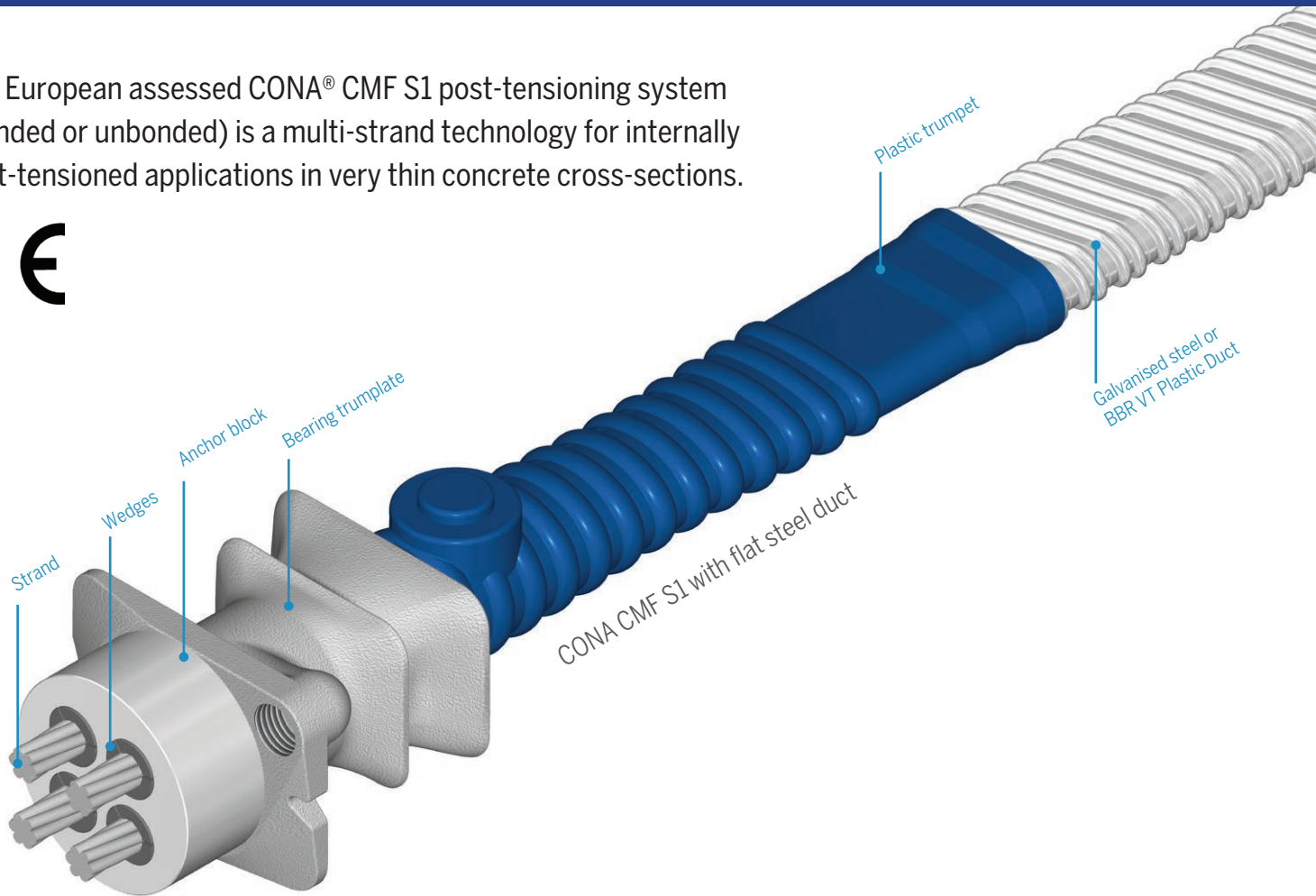


# BBR VT CONA CMF S1

Flat anchorage internal bonded or unbonded post-tensioning system



The European assessed CONA® CMF S1 post-tensioning system (bonded or unbonded) is a multi-strand technology for internally post-tensioned applications in very thin concrete cross-sections.



Sylvia Car Park (New Zealand)



A Global Network of Experts  
[www.bbrnetwork.com](http://www.bbrnetwork.com)

# BBR VT CONA CMF S1

Flat anchorage internal bonded or unbonded post-tensioning system



## Features

- Available in either 2, 3 or 4 strand configurations
- Optimised for 15.7 mm diameter, 1,860 MPa strand
- Compact light-weight and flat system for thin concrete cross-sections
- Advanced proprietary load transfer element for very small centre spacings and edge distances at the anchorages
- Application of full post-tensioning force at very low concrete strengths ( $f_{cm,0} = 17/21$  MPa)
- Fixed and movable couplers for joining tendons
- Corrugated round or flat tendon duct utilizing either galvanized steel or plastic material
- For bonded applications the ducts are filled with high performance BBR grout
- For unbonded applications the ducts can be injected with grease/wax or circulating dry air
- Restressable & exchangeable tendons perfectly suited for long-term inspection and maintenance
- System compatible with greased and HDPE sheathed monostrands
- European Technical Assessment and CE marking

## Available tendon sizes

Type of strands\*

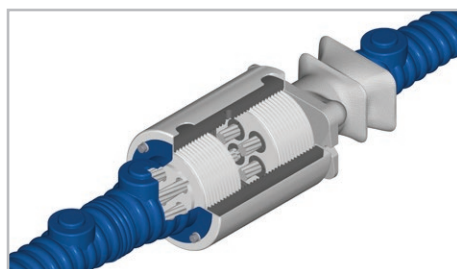
in	05	06
mm	12.9	15.7
mm <sup>2</sup>	100	150
MPa	1,860	1,860

Tendon sizes

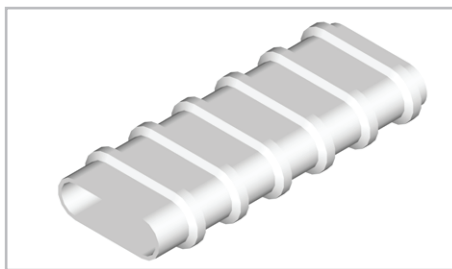
Strands	Characteristic ultimate resistance of tendon [kN]	
02	372	558
03	558	837
04	744	1,116

\* 12.5 mm and 15.3 mm diameter strand, and 1,770 MPa tensile strength strand is also available

## Compatible technologies



Coupler H (fixed & movable)



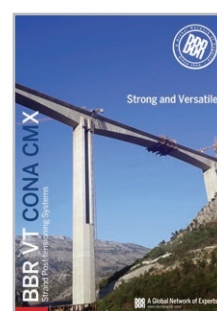
BBR VT Plastic Duct (flat & round)



CONA CMO - Bonded onion anchorage



Plain strand & monostrand



For further information download these brochures from our website.