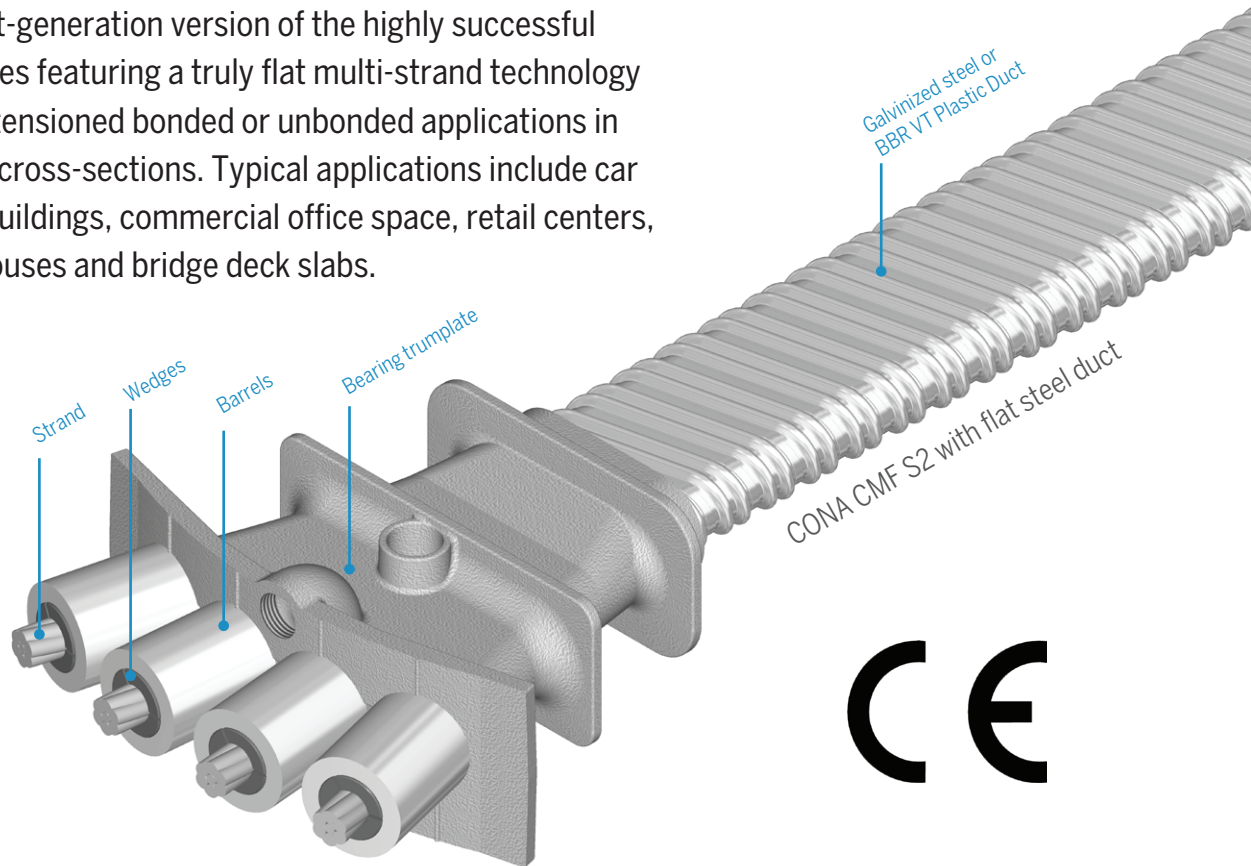


BBR VT CONA CMF S2

Flat anchorage internal bonded or unbonded post-tensioning system



The European assessed CONA® CMF S2 post-tensioning system is an advanced next-generation version of the highly successful CONA CMF flat series featuring a truly flat multi-strand technology for internally post-tensioned bonded or unbonded applications in ultra thin concrete cross-sections. Typical applications include car parks, apartment buildings, commercial office space, retail centers, distribution warehouses and bridge deck slabs.



CE



BBR VT CONA CMF S2

Flat anchorage internal bonded or unbonded post-tensioning system



Features

- Anchorages available with configurations from 2 up to 6 strands
- Compact lightweight anchorages optimized for either 12.9 mm or 15.7 mm diameter, 1,860 MPa strand
- Application of full post-tensioning force at very low concrete strengths $f_{cm,0} = 21/26$ MPa
- Advanced proprietary load transfer element for very small tendon center spacings, concrete edge distances and slab thickness'
- Fixed coupler for joining tendons
- Corrugated flat tendon duct utilizing either galvanized steel or plastic material
- For bonded applications the ducts are filled with high performance BBR grout
- In unbonded applications, greased/waxed and individually HDPE sheathed monostrands are used
- Alternatively, the ducts can be injected with grease/wax or circulating dry air
- Restressable & exchangeable tendons perfectly suited to long-term inspection and maintenance
- European Technical Assessment and CE marking

Available tendon sizes

Type of strands*

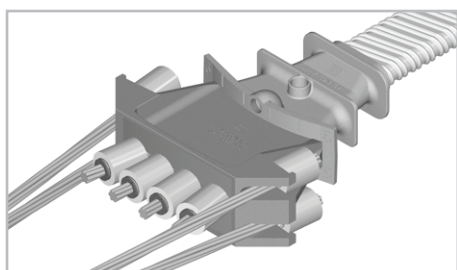
in	05		06	
mm	12.5	12.9	15.3	15.7
mm ²	93	100	140	150
MPa	1,860	1,860	1,860	1,860

Tendon sizes

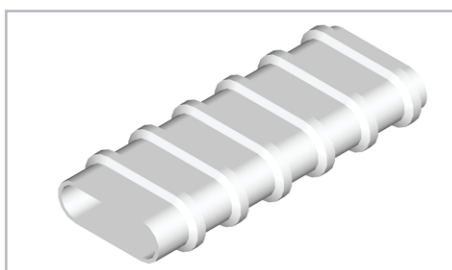
Strands	Characteristic ultimate resistance of tendon [kN]			
02	346	372	521	558
03	519	558	781	837
04	692	744	1,042	1,116
05	865	930	1,302	1,395
06	1,038	1,116	–	–

* 12.5 mm and 15.3 mm diameter strand, and 1,770 MPa tensile strength strand is also available

Compatible technologies



Coupler K (fixed)



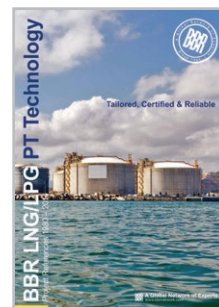
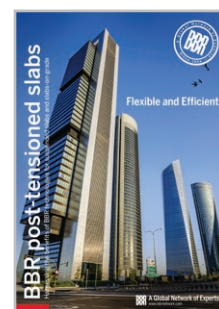
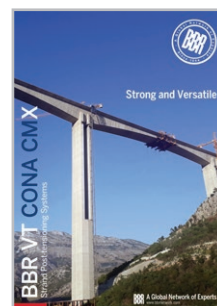
BBR VT Plastic Duct (flat)



CONA CMO - Bonded onion anchorage



Plain strand & monostrand



For further information download these brochures from our website.