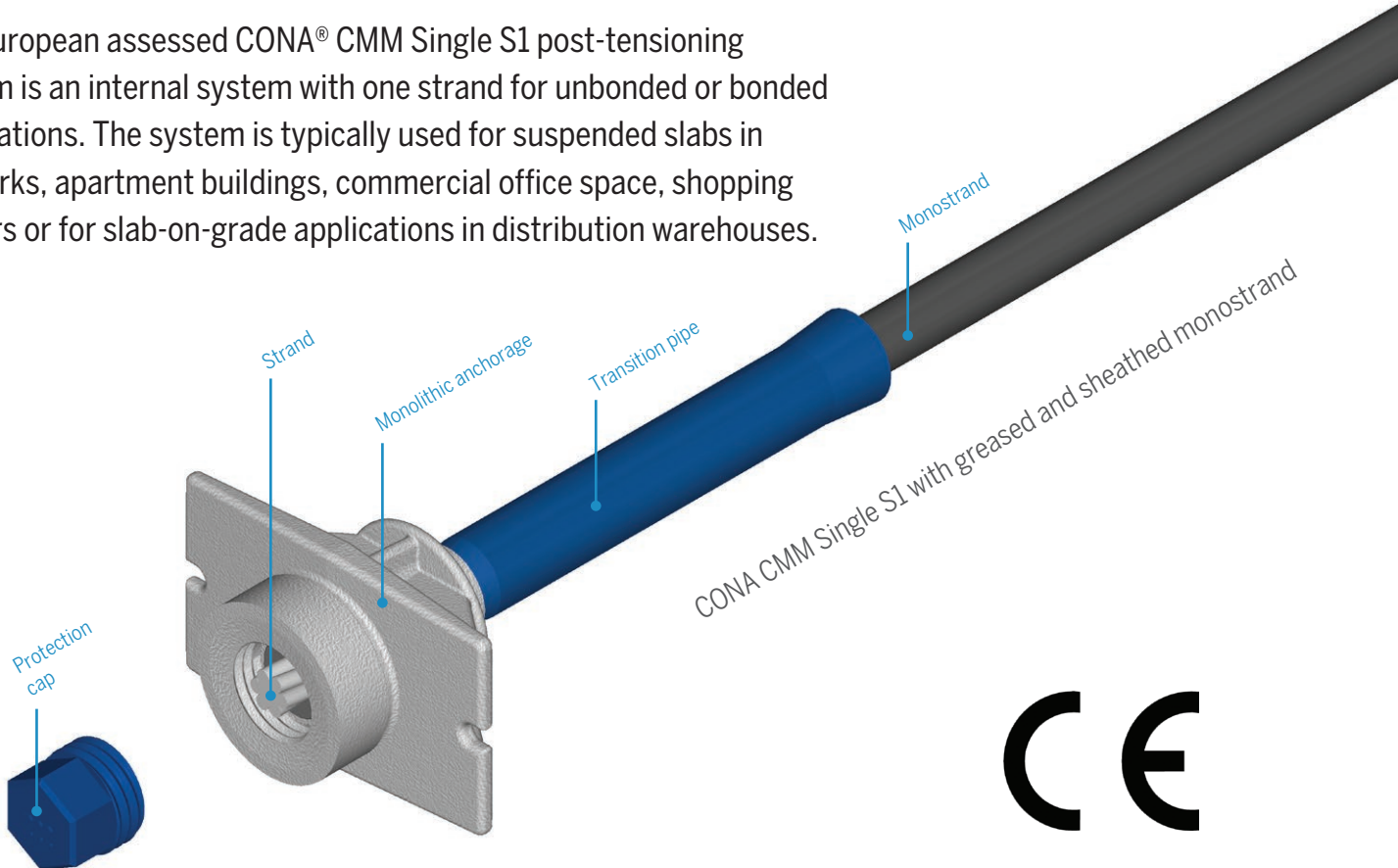


BBR VT CONA CMM Single S1

Monostrand unbonded or bonded post-tensioning system



The European assessed CONA® CMM Single S1 post-tensioning system is an internal system with one strand for unbonded or bonded applications. The system is typically used for suspended slabs in car parks, apartment buildings, commercial office space, shopping centers or for slab-on-grade applications in distribution warehouses.



Business Garden (Poland)

BBR VT CONA CMM Single S1

Monostrand unbonded or bonded post-tensioning system



Features

- Optimised for compacted strand – 15.2 mm diameter, 165 mm² area, 1,820 MPa, $F_{pk} = 300$ kN
- Advanced proprietary monolithic anchorage for very small tendon centre spacings and concrete edge distances
- Application of full post-tensioning force at very low concrete strengths ($f_{cm,0} = 20/24$ MPa)
- High level of corrosion protection ensured with transition pipe
- Fixed couplers for joining tendons
- In unbonded applications, greased/waxed and HDPE sheathed monostrands are used
- In bonded applications, round corrugated galvanized steel or plastic duct are filled with high performance BBR grout
- Restressable & exchangeable tendons perfectly suited for long-term inspection and maintenance
- European Technical Assessment and CE marking

Available tendon sizes

Type of strands*

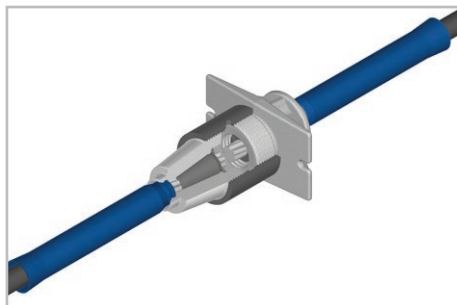
in	05		06		06C
mm	12.5	12.9	15.3	15.7	15.2
mm ²	93	100	140	150	165
MPa	1,860	1,860	1,860	1,860	1,820

Tendon sizes

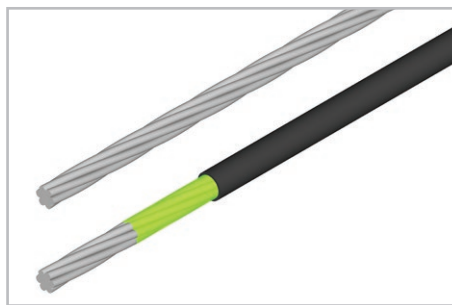
Strands	Characteristic ultimate resistance of tendon [kN]				
01	173	186	260	279	300

* 1,770 MPa tensile strength strand is also available

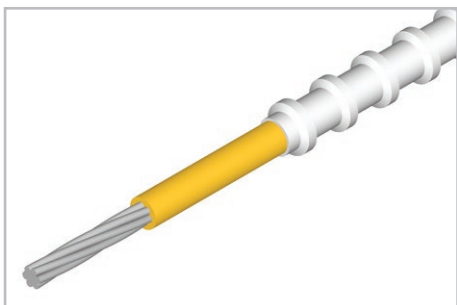
Compatible technologies



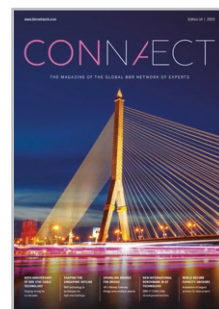
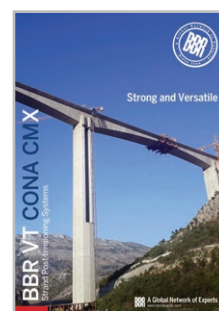
Coupler H



Plain strand & monostrand



Plastic Duct (round)



For further information download these brochures from our website.