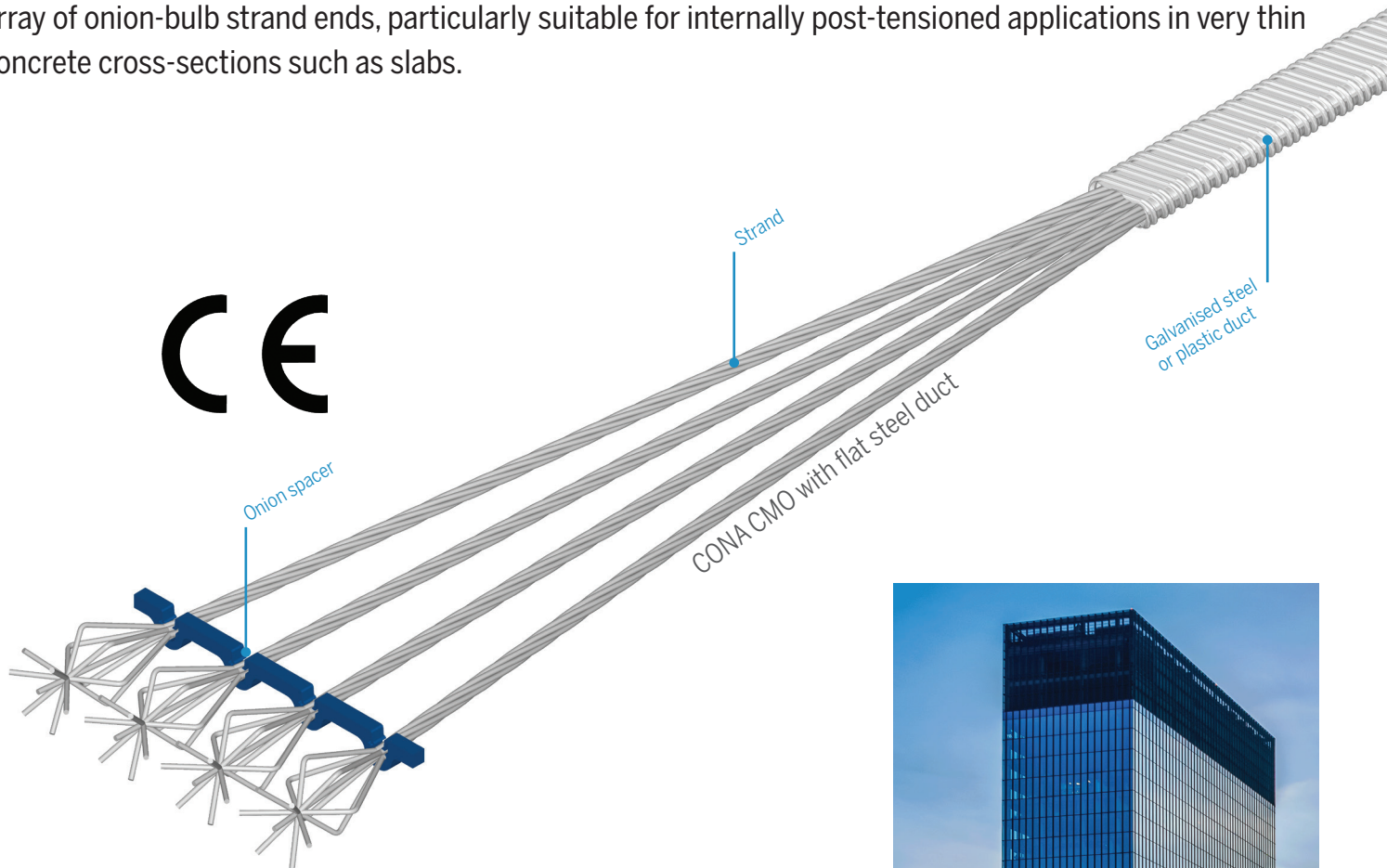


# BBR VT CONA CMO - Onion

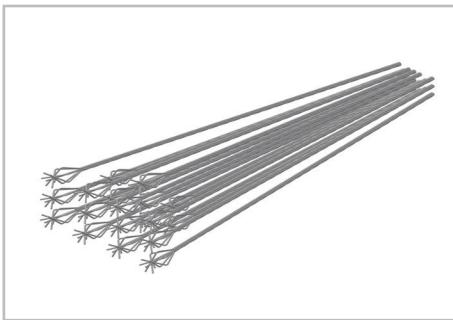
Cast-in and inaccessible bonded onion anchorage



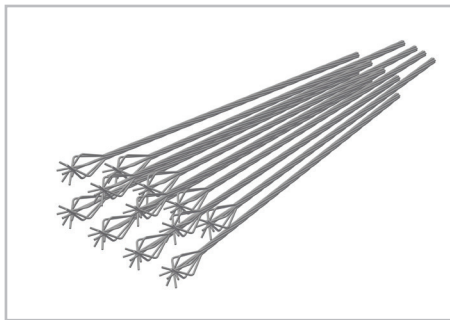
The European-assessed CONA® CMO is a multi-strand post-tensioning anchorage comprising of a flat array of onion-bulb strand ends, particularly suitable for internally post-tensioned applications in very thin concrete cross-sections such as slabs.



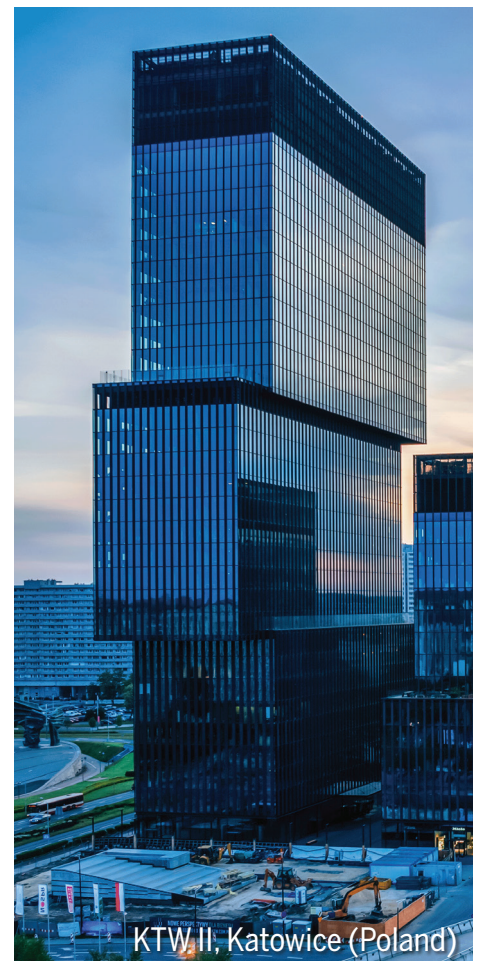
While not covered by the BBR VT CONA® CMO ETA, the use of bigger anchorages sizes is possible. Local BBR Network Members offer a variety of solutions, such as onion which fully comply with regulations applicable at the place of use.



Onion Anchorage 19 strands



Onion Anchorage 12 strands



KTW II, Katowice (Poland)

# BBR VT CONA CMO - Onion

Cast-in and inaccessible bonded onion anchorage



## Features

- Standard tendon sizes from 2 to 6 strands
- Optimised for 15.7 mm diameter, 1,860 MPa strand
- No anti-bursting or splitting reinforcement required at anchorage
- Innovative clip-lock strand spacer and duct sealing filler enhances productivity on site
- Very small centre spacings and edge distances at the anchorages
- Application of full post-tensioning force at very low concrete strengths ( $f_{cm,0} = 20/25$  MPa)
- Corrugated round or flat tendon duct utilizing either galvanized steel or plastic material
- European Technical Assessment and CE marking

## Available tendon sizes

Type of strands\*

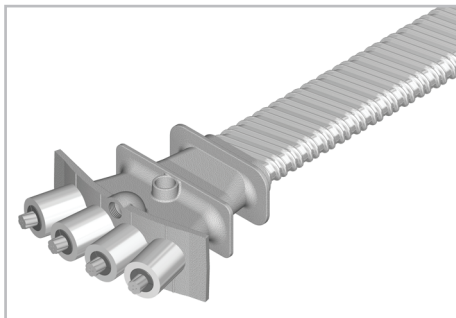
in	05	06
mm	12.9	15.7
mm <sup>2</sup>	100	150
MPa	1,860	1,860

Tendon sizes

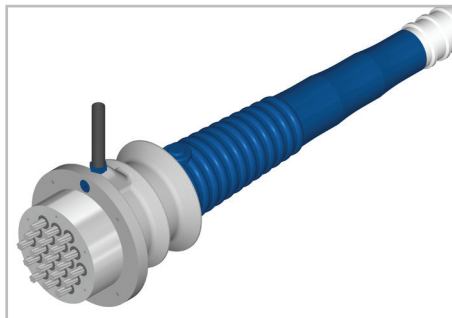
Strands	Characteristic ultimate resistance of tendon [kN]	
01	186	279
02	372	558
03	558	837
04	744	1,116
05	930	1,395
06	1,116	1,674

\* 12.5 mm and 15.3 mm diameter strand, and 1,770 MPa tensile strength strand is also available

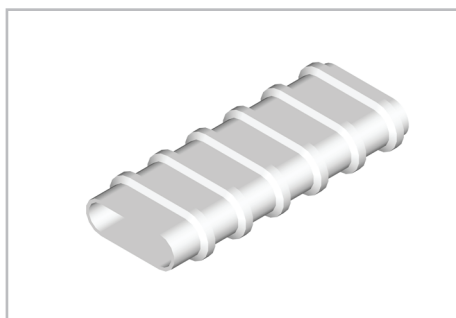
## Compatible technologies



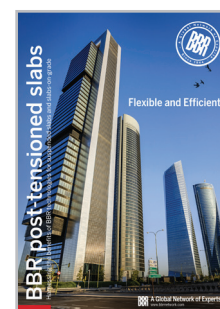
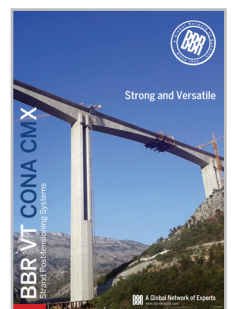
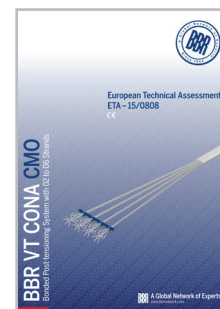
CONA CMF - Flat anchorage



CONA CMI - Internal anchorage



Plastic Duct (flat & round)



For further information download these brochures from our website.